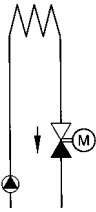
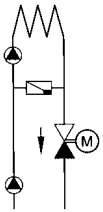
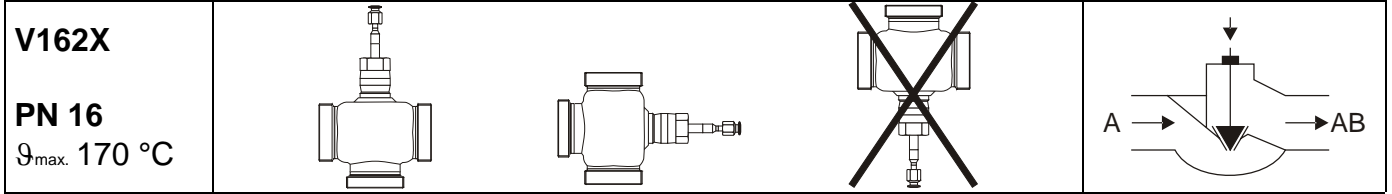
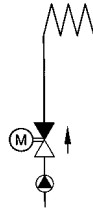


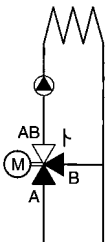
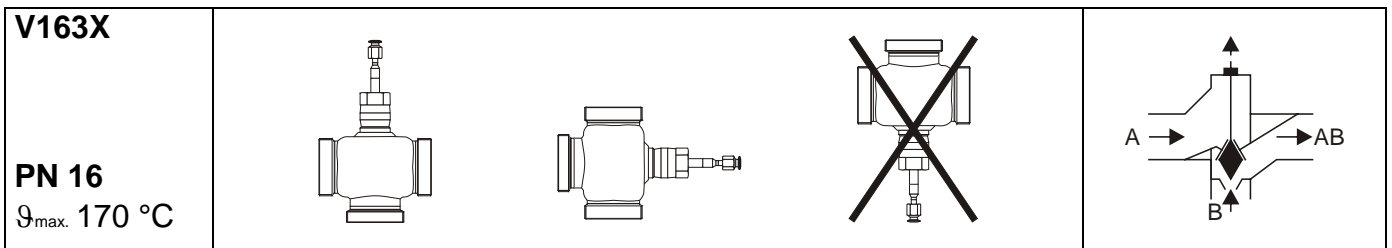
MONTAGEANLEITUNG • MOUNTING INSTRUCTIONS • INSTRUCTION DE MONTAGE
 MONTAGE-AANWIJZING • INSTRUZIONI DI MONTAGGIO • INSTRUCCIONES DE MONTAJE
 MONTERINGSINSTRUKTION • ASENNUSOHJE • MONTERINGSVEJLEDING



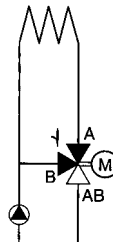
Ventil im Rücklauf
 Valve in the return
 Vannes sur retour
 Ventil i returledning
 Afsluiter in de retour
 Valvola sul ritorno
 Venttiili asennettuna paluujohtoon
 Válvula sobre retorno
 Ventil i returløb



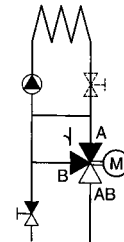
Ventil im Vorlauf
 Valve in the flow
 Vanne sur départ
 Ventil i framledning
 Afsluiter in de aanvoer
 Valvola sulla mandata
 Venttiili asennettuna menojohtoon
 Válvula sobre impulsión
 Ventil i fremløb



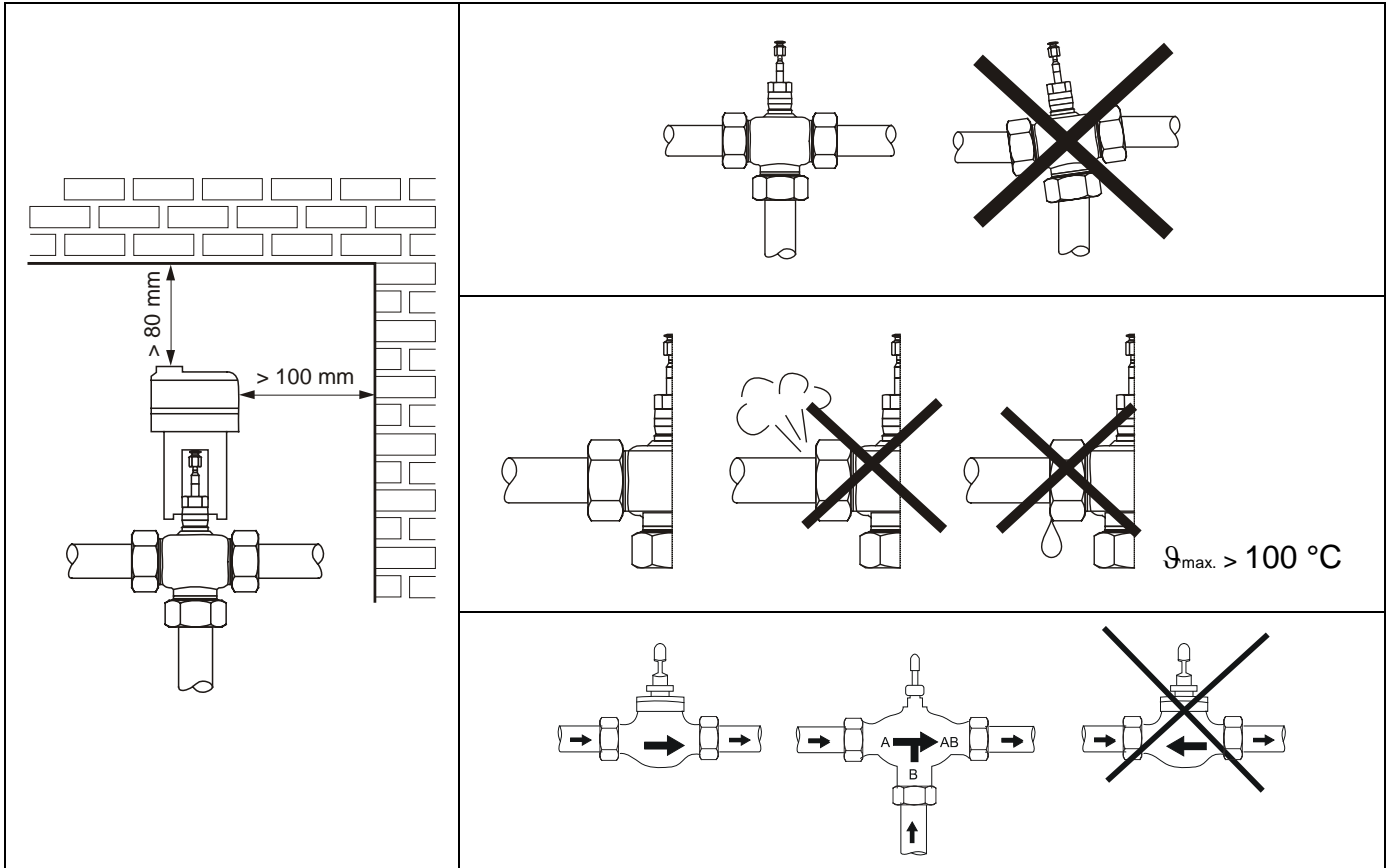
Beimischschaltung: Ventil als Mischer im Vorlauf.
 Mixing system: Valve as a mixer in the flow.
 Couplage en mélange: Vanne sur le départ montée en mélange.
 Konstant flöde i sekundärkrets.
 Variabelt flöde i primärkrets.
 Blandningsventil i framledning.
 Mengschakeling: Afsluiter als mengorgaan in de aanvoer.
 Sistema a miscelazione: Valvola montata come miscelatrice sulla mandata.
 Sekoituskyltöntä: Sekoitusventtiili menovedessä.
 Montaje como mezcladora: Válvula montada como mezcladora en la impulsión.
 Blandeventil i fremløb.



Umlenkschaltung: Ventil als Mischer im Rücklauf.
 Diverting system: Valve as a mixer in the return.
 Couplage en répartition: Vanne sur le retour montée en mélange.
 Variabelt flöde i sekundärkrets.
 Konstant flöde i primärkrets.
 Blandningsventil i returledning.
 Verdeelschaeting: Afsluiter als mengorgaan in de retour.
 Sistema a deviazione: Valvola montata come miscelatrice sul ritorno.
 Ohituskyltöntä: Sekoitusventtiili palluvedessä.
 Montaje como diversora: Válvula montada como mezcladora en el retorno.
 Blandeventil i returløb.


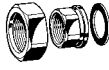


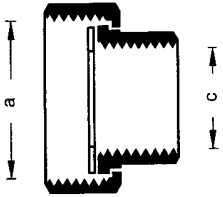
Einspritzschaltung: Ventil als Mischer im Rücklauf.
 Injection system: Valve as a mixer in the return.
 Couplage en injection: Vanne sur le retour montée en mélange.
 Konstant flöde i sekundärkrets med sekundärpump och förbigang. Konstant flöde i primärkrets. Blandningsventil i returledning.
 Injectie-mengschakeling: Afsluiter als mengorgaan in de retour.
 Sistema ad iniezione: Valvola montata come miscelatrice sul ritorno.
 Vakiokierto: Sekoitusventtiili palluvedessä.
 Montaje inyección: Válvula montada como mezcladora en el retorno.
 Blandeventil i returløb med dobbeltshunt.



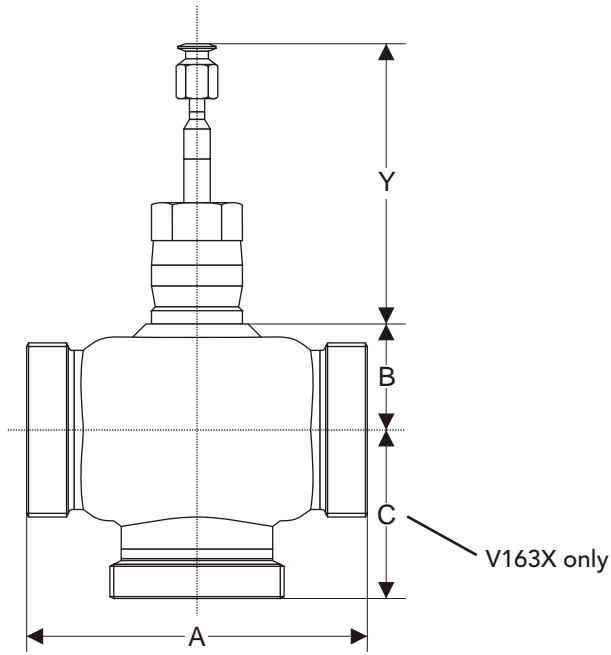
ACCESSORIES

V162X 2 port valves require 2 internal thread connection sets, V163X 3 port valves require 3 internal thread connection sets. All valves are supplied with the requisite number of connection sets. Spare connection sets are available as below

connection	pipe size	DN	order number	connection set		description
internal thread	G 1/2"	15	ACCV-TC-15			consisting of 1 union nut, 1 tailpiece, and 1 gasket
	G 3/4"	20	ACCV-TC-20			
	G 1"	25	ACCV-TC-25			
	G 1-1/4"	32	ACCV-TC-32			
	G 1-1/2"	40	ACCV-TC-40			
	G 2"	50	ACCV-TC-50			

dimensions of connection sets			order number
	a	c	
	G 1-1/8"	G 1/2"	ACCV-TC-15
	G 1-1/4"	G 3/4"	ACCV-TC-20
	G 1-1/2"	G 1"	ACCV-TC-25
	G 2"	G 1-1/4"	ACCV-TC-32
	G 2-1/4"	G 1-1/2"	ACCV-TC-40
	G 2-3/4"	G 2"	ACCV-TC-50

DIMENSIONS



Dimensions (in mm)

valve size	A	B	C (V163X only)	Y	
				V162X	V163X
DN15	80	40	55	89 (stem down)	107 (stem up)
DN20	90	40	55		
DN25	110	40	55		
DN32	120	40	55		
DN40	130	40	60		
DN50	150	40	65		

For actuator dimensions, please refer to:

- AL0620-24-x, -230-x TA200898
- AL0620-P-x TA200900
- AL1820-24-K, -230-K TA200905
- AL1820-P-K TA200901

Manufactured for and on behalf of the Environmental and Combustion Controls Division of Honeywell Technologies Sàrl, Ecublens, Route du Bois 37, Switzerland by its Authorized Representative.

Trend Control Systems Ltd reserves the right to revise this publication from time to time and make changes to the content hereof without obligation to notify any person of such revisions or changes.

Trend Control Systems Limited

P.O. Box 34 Horsham, West Sussex, RH12 2YF, UK. Tel: +44 (0)1403 211888, Fax: +44 (0)1403 241608, www.trend-controls.com